

RVU Manager

The relative value unit (RVU) is the primary component used to measure and assign value to the work performed by physicians and to compensate them in a productivity model. RVUs were originally created to standardize the reimbursement processes used by the Centers for Medicare & Medicaid Services (CMS). Over time, they have emerged as a national standard through which most physicians are compensated today.

RVUs vs Proxy RVUs

There are two basic categories of physician productivity: clinical and non-clinical. Clinical productivity involves activities like in-office patient visits, surgeries and other medical procedures. Most clinical activities are incorporated into the RVU system, which makes them relatively easy for doctors to submit and administrators to process.

Non-clinical activities may include the creation of new programs, executing administrative tasks, and attending meetings and conferences. These are important activities that benefit patients, programs and institutions. But because they tend to be irregular, they can't be calculated using traditional RVU designations and processes. To compensate doctors for these activities, "proxy RVUs" are used. Proxy RVUs are handled differently than clinical RVUs, but they're just as important—as approximately 10% of all the RVUs submitted are proxy RVUs.

Key issues associated with proxy RVUs

Until now, there's been no standardized way of handling proxy RVUs. That lack of standardization has resulted in inefficient data submission, error-prone data compilation, and imprecise billing and coding, which has led to low engagement, slow reporting and payment delays. Most importantly, doctors are not fairly compensated for their non-clinical work.

The RVU Manager solution

iQ Technologies' RVU Manager eliminates the antiquated manual processes currently used to manage proxy RVUs through a responsive web application that facilitates the management of RVUs that lack CMS assignments.

RVU Manager was designed by doctors for doctors—to simplify and automate the data collection, calculation, tracking, submission, and reporting of proxy RVUs. With RVU Manager, healthcare professionals and administrators can move beyond time-consuming, outdated management methods by leveraging a real-time digital service that delivers improved operational efficiencies, greater accountability, faster processing times and enhanced user engagement.

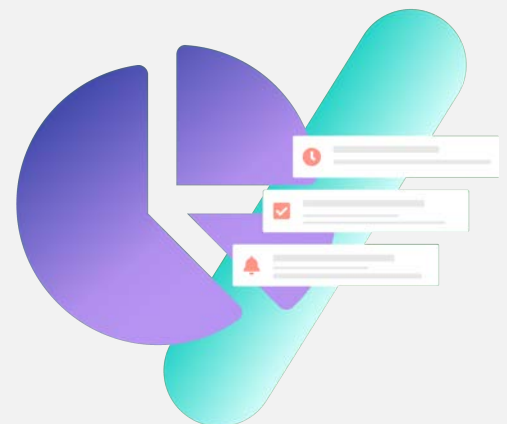
RVU Manager key benefits

- Simplified RVU data recording and submission.
- Reduction of errors common in manual reporting.
- More efficient reporting that frees up time for both doctors and administrators.
- Reduced approval roadblocks.
- Automated back-end administrative processes.
- Minimized discrepancies, oversights and errors.
- Faster processing of RVU submissions



The RVU Manager has been a complete game changer for me as an administrator. We used to receive and calculate proxy RVUs manually, which took countless hours and a full-time employee to manage the process. Now, they're submitted online, calculated automatically and approved in a matter of hours. It's no longer a struggle to get providers to submit them, and every provider I've heard from has expressed how easy it is to use and how much they appreciate its ability to track their RVUs."

*RVU Manager Administrator,
MultiCare Pulse Heart Institute*



RVU Manager key features

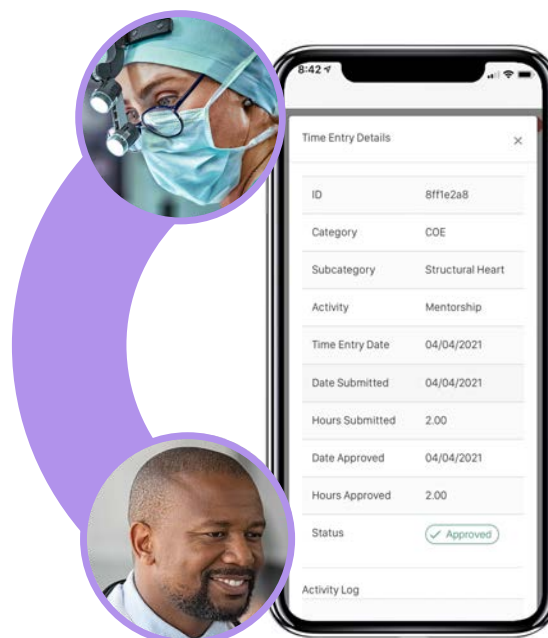
RVU Manager helps physicians spend less time on tedious, administrative tasks and more time doing what doctors do best—helping patients. RVU Manager also provides medical institutions with significant value by streamlining administrative processes on the back end. Key features of RVU Manager include:

- **RVU data recording and submission:** Often, proxy RVUs are manually recorded in notebooks, Excel spreadsheets, or using whatever might be available at the moment. RVU Manager enables physicians to record and submit RVUs in real-time, through their own personal, handheld devices. This also benefits administrators who receive standardized submissions that can be easily understood, evaluated and approved.
- **RVU value assignment:** In order to compensate doctors, values must be assigned to each RVU. RVU Manager enables administrators to assign values to proxy RVUs depending on the specific activity and incorporating considerations such as the physician's specialty and productivity. Once a value is assigned, it's stored in a database. This removes the need for admins to evaluate the same activities over and over again as the system automatically assigns that value to the same RVUs when used in future submissions.
- **RVU tracking:** Typical productivity reports are difficult to both navigate and comprehend. Procedures are often categorized by type rather than by patient, making it nearly impossible to ensure every RVU was submitted, calculated, and credited correctly. RVU Manager helps doctors track all proxy RVUs submitted, helping to ensure they were entered into the system, approved, and paid. This also helps administrators to identify and address any discrepancies with ease.
- **RVU data transparency:** A lack of data transparency can create doubt that leads to friction and misunderstandings between physicians and administrators. RVU Manager introduces clarity through a simple submission process, the ability to attach supporting documentation, and a venue for clear communication.
- **Smart workflows for approvals, notifications:** Approving and processing RVUs manually can lead to discrepancies, oversights, and delays. RVU Manager automates the approval process where possible and sends automatic notifications when an RVU submission has been approved or returned with a request for supporting data.
- **Easy-access administrative panel:** RVU Manager's simple design, intuitive administrative panel and easily navigable dashboards make data submission, tracking, and reporting easier than ever.

- **Single platform:** The iQ Platform includes multiple complementary, integrated solutions including RVU Manager, Case Manager, and Doc Chat, all designed to increase productivity and enable data to flow by delivering the right digital experience at the right time on any device—and without the complexities.
- **Cross-platform operability:** RVU Manager as well as the complementary solutions within the iQ Platform operate on the world's most popular computing devices, including desktops, laptops, tablets, and iOS or Android smartphones.

Administrative processes automated, streamlined

Not only doctors' benefit from simplified RVU management. Administrators on the backend save time by leveraging automated processes and streamlined work flows that make approvals, requests for more information, and notifications easier. This translates into significant savings by hospitals and healthcare organizations.



Your device of choice

RVU Manager is a responsive web application designed to operate on any desktop using the Apple Safari, Google Chrome or Microsoft Edge browsers. The app operates on any tablet device or smartphone using Google Android or Apple iOS mobile operating systems. By extending the user experience to the device of choice, access is available at any time and from any location, simplifying the process of entering and managing data, and ensuring it's done in a timely manner.

Learn more

Learn more about how the iQ Platform improves collaboration for better coordinated care.

Email: info@iq-technologies.com

About the iQ Platform

The iQ Platform brings data and apps together in a single solution designed to increase productivity by delivering the right digital experiences at the right time on any device. The result is medical work processes that move seamlessly together, resulting in productivity gains and improved patient care.

This software-as-a-service (SaaS) cloud solution is a comprehensive, integrated set of capabilities that provides a modern user experience. As a responsive web app, the services are available on any desktop leveraging popular browsers such as Apple Safari, Google Chrome and Microsoft Edge. The app scales the user experience to any mobile tablet device or smartphone using Google Android or Apple iOS mobile operating systems.

